

## STAINLESS CONVEYOR DRIVE – SPEED REDUCER

### SUPERIOR WASHDOWN PERFORMANCE – CONQUER THE TOUGHEST WASHDOWN CHALLENGES WITH EASE

IP69K Certified Stainless Conveyor Drive with continuous, smooth housing with no covers, seams or bolts minimize the possibility for bacterial growth to make it an optimal choice for food processing and severe washdown environments.

### IP69K CERTIFIED FOR SEVERE WASHDOWN

- 176 °F water and steam at 1450 psi, 4 gal/minute
- Superior washdown performance for meat and poultry conveyor applications

### PREMIUM EFFICIENCY GEARING

Minimizes energy losses, optimizing operating cost

### WASHTITE SHIELD AND INTEGRATED INPUT SEALING GASKET BETWEEN MOTOR AND REDUCER

Superior washdown fluid ingress protection

### COMMON INDUSTRY INTERCHANGE DIMENSIONS

Simplifies installation

### FOOD SAFETY BLUE PLUGS

- FDA compliant material
- Magnetically detectible
- X-ray detectible
- Plugs pressure wash tested to 1450 psi

### MOBIL GLYGOYLE\* 460 H1 REGISTERED LUBRICANT

Suitable for food contact

### 300 SERIES STAINLESS STEEL

\*Glygoyle is a registered trademark of Exxon Mobil Corporation or one of its subsidiaries.



STAINLESS CONVEYOR DRIVE	
Center Distances	1.75, 2.00, 2.38, 2.63, 3.00 Inches
Standard Ratio Range*	5:1 to 100:1
Input Power Rating	0.11 HP to 10.87 HP
Output Torque Rating	Up to 4192 lbf-in
Gearing Efficiency	Up to 97%

\*Other ratios available upon request

## CONFIGURATIONS



**MPSS**  
HOLLOW OUTPUT



**MPNS**  
SOLID OUTPUT



**MPRS**  
HOLLOW OUTPUT  
WITH TORQUE ARM BRACKET



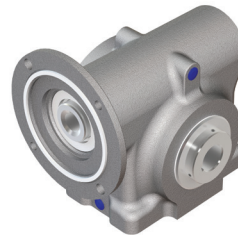
**MSFS**  
HOLLOW OUTPUT  
WITH OUTPUT FLANGE



**MDPS**  
SOLID OUTPUT WITH BASE FEET



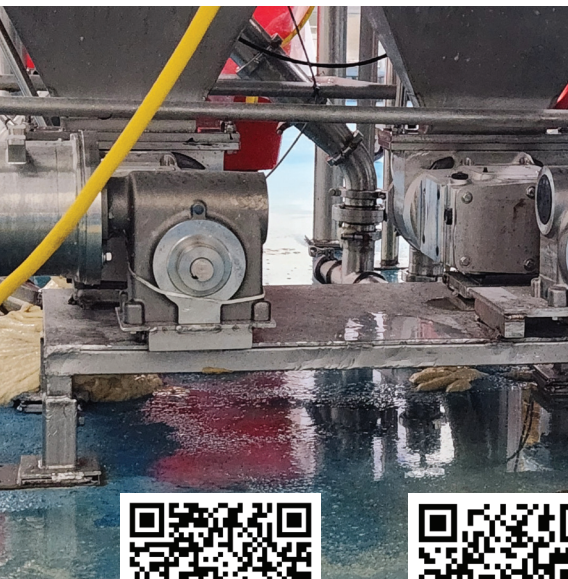
**MPTS**  
HOLLOW OUTPUT WITH BASE FEET



**MPMS**  
SYMMETRICAL HOUSING HOLLOW OUTPUT  
WITH SET SCREWS

### AVAILABLE ACCESSORIES

- Torque Arm Brackets
- Shaft Clamping Collars
- Stainless Vent
- Safety Covers
- Bronze Hollow Output Shaft Bushings
- Bronze Input Shaft Bushing
- Base Feet (Two-Piece)
- Output Mounting Flanges



Visit our [website](#)  
for more details.



Visit the [Stainless Conveyor Drive Configurator](#)  
on our product web page for all the available options.

WINSMITH | 716-592-9310 | © 2025 WINSMITH | [www.winsmith.com](#)

HBD Industries, Inc. and its subsidiaries are not responsible for possible errors in catalogs, brochures, websites and other materials, and may change such information without notice. Winsmith reserves the right to modify its products without notice, including products already on order, if the modified product meets any agreed-upon specifications. All trademarks in this material are the property of HBD Industries Inc., or its subsidiaries. All other trademarks are the property of their respective owners.