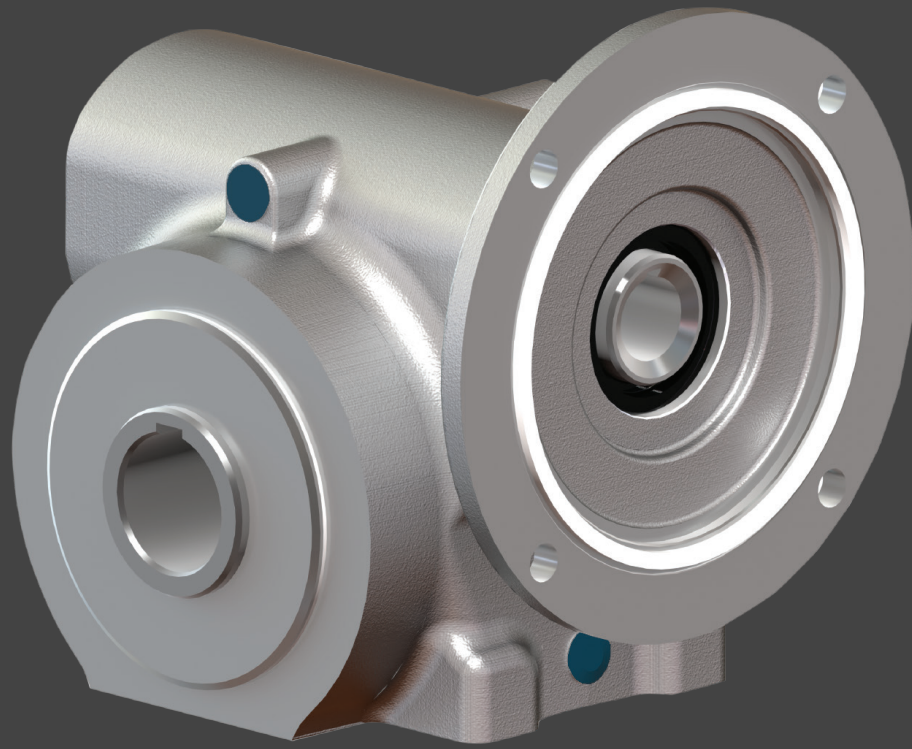
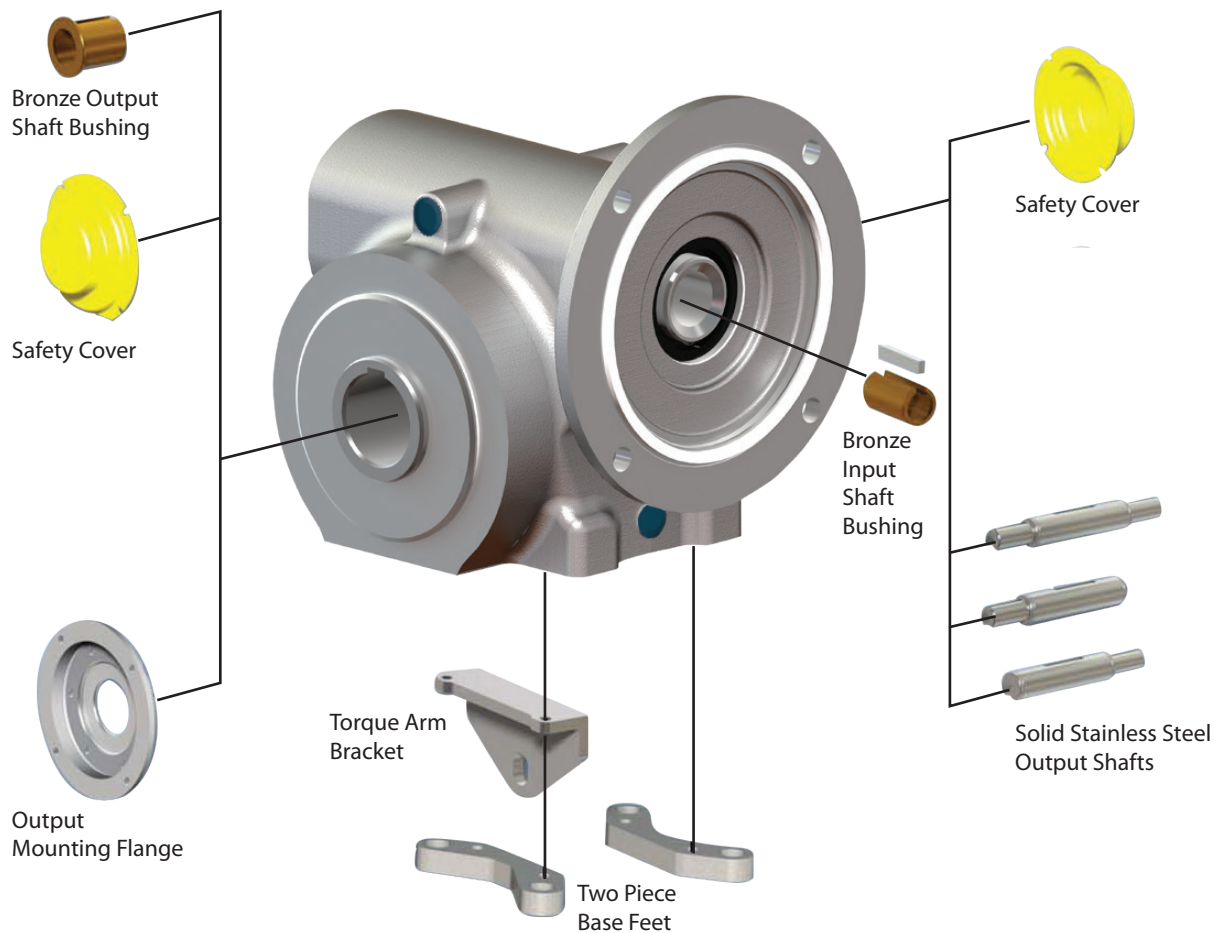


## STAINLESS CONVEYOR DRIVE



## MODULAR DESIGN



## WINSMITH KLD

The WinSmith KLD is a keyless shaft locking device that is the perfect addition to the IP69K certified Stainless Conveyor Drive

### Key Benefits

- **Ease of Assembly & Disassembly**
  - Fewer parts and simplified design allow for installation in minutes
- **Mitigate Fretting Corrosion**
  - Proprietary surface preparation and zero backlash connection mitigate fretting corrosion allowing for easier disassembly
- **Engineered Tapered Bushings**
  - Accommodate standard drive shaft, negating the need for specialized end-user shafts



# SUPERIOR WASH DOWN PERFORMANCE

## Continuous, Smooth Housing

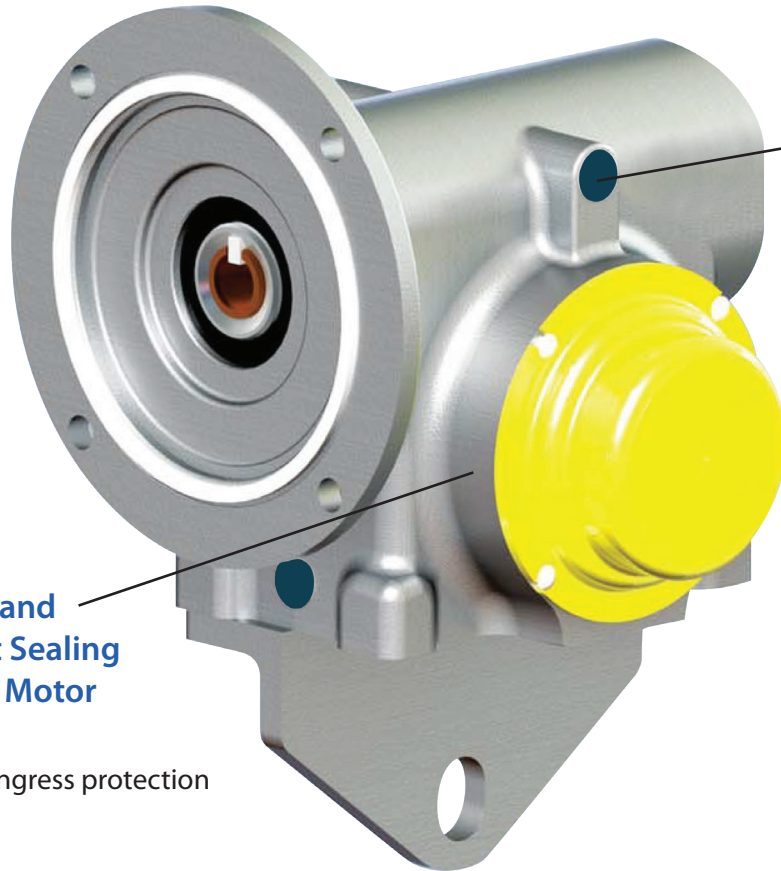
- No covers, seams, or bolts make wash down easy and minimize the possibility for bacterial growth

## Mobil Glygoyle\* 460 H1 Registered Lubricant

- Suitable for food contact

## Sealed Operation

- Superior wash down performance for meat and poultry conveyors



## Food Safety Blue Plugs

- FDA compliant material
- Magnetically detectible
- X-ray detectible
- Plugs pressure wash tested to 1450 psi

## WashTite Shield and Integrated Input Sealing Gasket Between Motor and Reducer

- Provides superior ingress protection

## Premium Efficiency Gearing

- Up to 97% efficient gearing provides affordable energy savings

## Common Industry Interchange Dimensions

- Simplifies installation

## IP69K Certified for Severe Washdown

- 176 °F water and steam at 1450 psi, 4 gal/minute

\*Glygoyle is a registered trademark of Exxon Mobil Corporation or one of its subsidiaries.

## CONFIGURATIONS



**MPSS**  
HOLLOW OUTPUT



**MPNS**  
SOLID OUTPUT



**MPRS**  
HOLLOW OUTPUT WITH  
TORQUE ARM BRACKET



**MSFS**  
HOLLOW OUTPUT  
WITH OUTPUT FLANGE



**MDPS**  
SOLID OUTPUT  
WITH BASE FEET



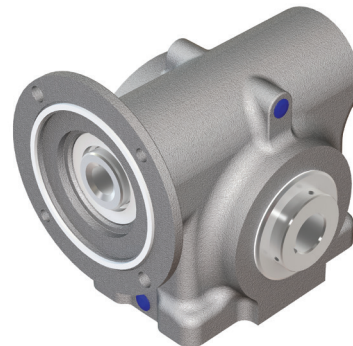
**MPTS**  
HOLLOW OUTPUT  
WITH BASE FEET

## MPMS CONFIGURATION

Hollow output shaft with a set-screw connection for an added ease of installation

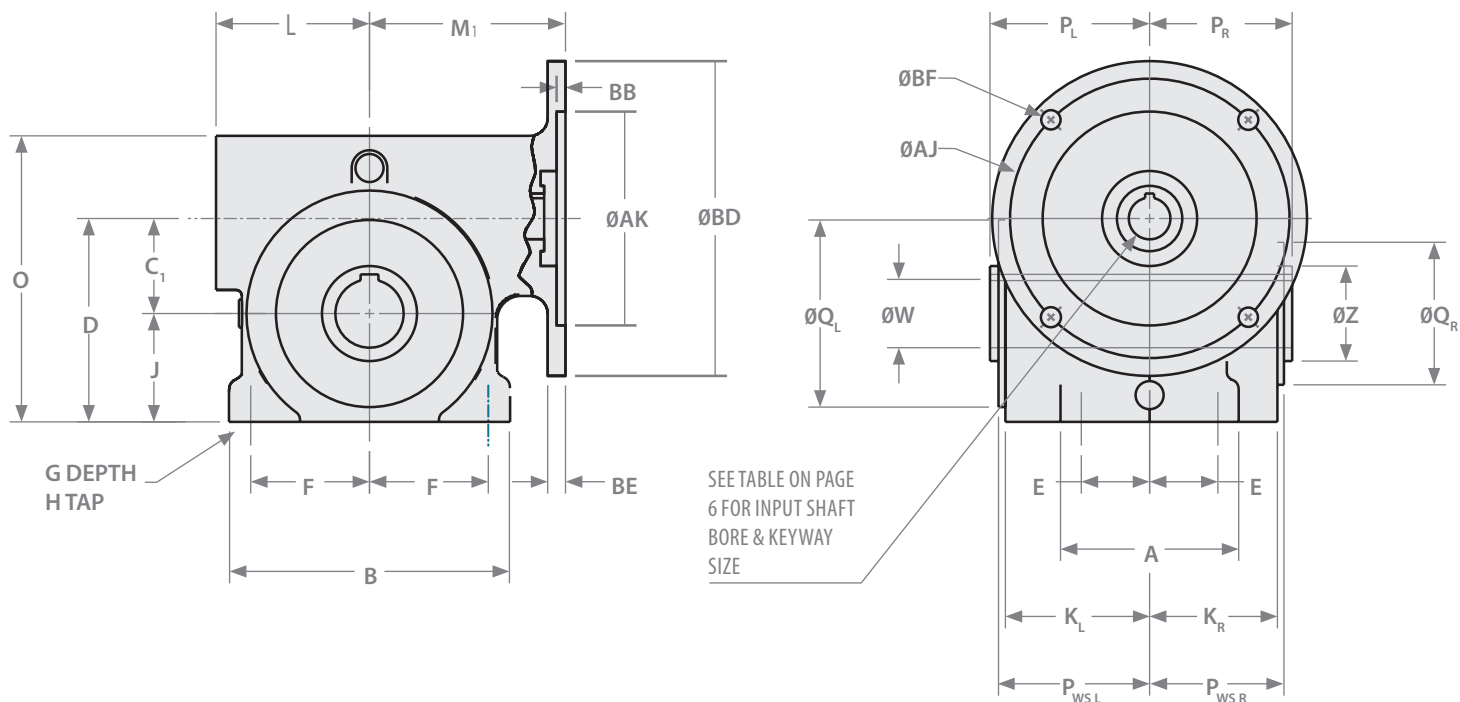
### Key Features

- **Stainless Output Shaft with Set Screws**
  - Improves interchangeability
  - Simple, effective shaft connection
- **Symmetrical Dimensions**
  - Offers a wider range of mounting options



\*See page 5 for dimensions

# DIMENSIONS



## SPEED REDUCER

SIZE	A	B	C <sub>1</sub>	D	E	F	G DEPTH	H TAP	J	K <sub>L</sub>	K <sub>R</sub>	L	O	P <sub>L</sub>	P <sub>R</sub>	P <sub>WSL</sub>	P <sub>WSR</sub>	Q <sub>L</sub>	Q <sub>R</sub>	Z
S17	3.56	5.22	1.750	3.81	1.38	2.09	0.52	3/16-18	2.06	2.88	2.50	3.27	5.25	3.19	2.81	3.04	2.66	3.63	2.19	1.49
S20	3.75	5.92	2.000	4.28	1.44	2.50	0.62		2.28	3.04	2.69	3.23	6.01	3.35	3.01	3.20	2.85	3.94	3.00	1.99
S24	3.75	6.19	2.375	4.88	1.44	2.50	0.63	3/8-16	2.50	3.14	2.78	3.89	6.75	3.46	3.09	3.30	2.94	4.63	3.25	2.24
S26	4.50	7.50	2.625	5.56	1.69	3.19	0.69		2.94	3.31	2.81	3.82	7.38	3.63	3.12	3.47	2.97	5.25	3.50	2.49
S30	5.13	8.67	3.000	6.50	2.00	3.75	0.69	7/16-14	3.50	3.63	3.00	4.15	8.69	4.00	3.38	3.79	3.16	6.00	3.75	2.62

## QUILL INPUT ADAPTERS

SIZE	M <sub>1</sub>		AJ		AK		BB		BD		BE		BF		INPUT KEYWAY	
	56C 140TC	180TC	56C 140TC	180TC	56C 140TC	180TC	56C 140TC	180TC	56C 140T	180TC	56C 140TC	180TC	56C 140TC	180TC	56C 140TC	180TC
S17	4.18	NA	5.88	NA	4.50	NA	0.19	NA	6.63	NA	0.31	NA	0.406	NA	3/16 X 3/32	NA
S20	4.13										0.38					
S24	5.38										0.33					
S26	5.34	6.02									0.34					
S30	5.54	6.22		7.25		8.50		0.19		9.00	0.35	0.68		0.531		1/4 X 1/8

## INPUT SHAFT BORES

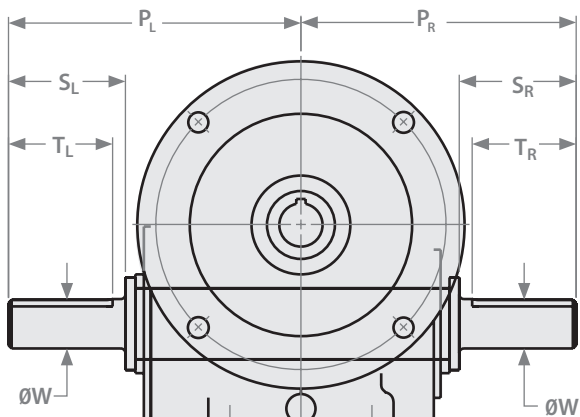
SIZE	BORE <sup>+0.01/-0.000</sup>
56C	0.6255
140TC	0.8755
180TC	1.1255

## MPMS CONFIGURATION

SIZE	K <sub>L</sub>	K <sub>R</sub>	P <sub>L</sub>	P <sub>R</sub>	P <sub>WSL</sub>	P <sub>WSR</sub>
S17	2.62	2.50	3.09	3.03	2.78	2.66
S20	2.98	2.40	3.54	3.03	3.13	2.56
S24	2.79	2.61	3.38	3.22	2.95	2.77
S26	3.15	2.57	3.74	3.20	3.30	2.72
S30	3.63	3.00	4.31	4.31	3.78	3.15

All dimensions are in inches.

# DIMENSIONS



## HOLLOW OUTPUT SHAFT BORE SIZES (W)\*\*

SIZE	1.000	1.188	1.250	1.438	1.500	1.688	1.938
S17	●						
S20	▲ ●	▲ ●	▲ ●	●			
S24	▲ ●	▲	▲ ●	●	●		
S26	▲ ●	◆	▲ ●	▲	▲ ●	●	
S30	◆	◆	▲ ●	▲	◆	◆	●
OUTPUT KEYWAY	1/4 x 1/8	1/4 x 1/8	1/4 x 1/8	3/8 x 3/16	3/8 x 3/16	3/8 x 3/16	1/2 x 3/16

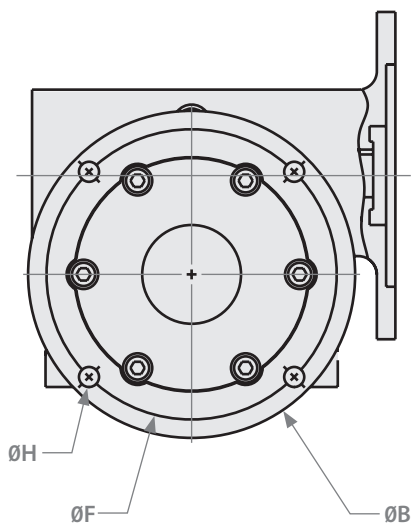
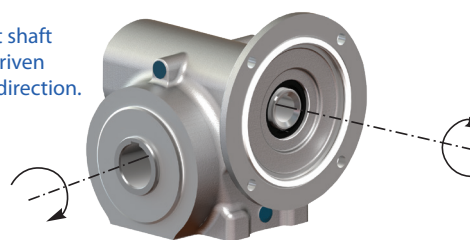
● = Bored to size ▲ = Bronze bushing available ◆ = Optional  
 \* Keyway is 3/8 x 1/8 \*\* Bore Tolerance +.002/.000

## SOLID OUTPUT SHAFTS

SIZE	P <sub>L</sub>	P <sub>R</sub>	S <sub>L</sub>	T <sub>L</sub>	W*	OUTPUT KEYWAY	S <sub>R</sub>	T <sub>R</sub>	
S17	5.75	5.38	2.41	2.38	0.875	3/16 x 3/32	2.41	2.38	
									2.51
S20	5.91	5.58	2.36	2.28	1.000		2.36	2.28	
S24	6.27	5.91	2.60	2.52	1.125	1/4 x 1/8	2.60	2.52	
					1.250				
S26	6.42	5.97	2.59	2.58	1.125	2.59	2.50		
					2.52				
					1.250				
S30	6.57	6.56	2.63	2.55	1.375	2.63	2.54		
				2.55	1.500			3/16 x 3/32	2.55
				2.58	1.500				

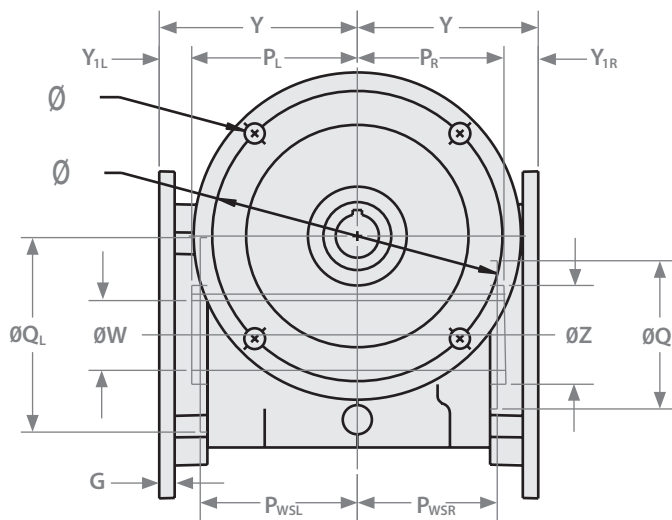
\*Shaft Diameter Tolerance: +.000/-.001

The input shaft may be driven in either direction.



## OUTPUT MOUNTING FLANGES

SIZE	B	F	G	H	P <sub>L</sub>	P <sub>R</sub>	Q <sub>R</sub>	Y <sub>L</sub>	Y <sub>R</sub>	Y <sub>1L</sub>	Y <sub>1</sub>
S17	6.56	5.875	0.31	0.344	3.19	2.81	2.19	3.88	3.50	0.69	0.69
S20	6.62	5.875			3.35	3.01	3.00	4.02	3.67	0.67	0.66
S24	8.41	7.500	0.38	0.406	3.46	3.09	3.25	4.14	3.78	0.68	0.69
S26	8.89	8.000			3.63	3.12	3.50	4.37	3.87	0.74	0.75
S30	10.00	9.000			4.00	3.38	3.75	4.81	4.19	0.81	0.81



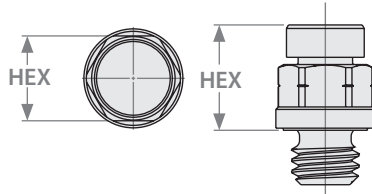
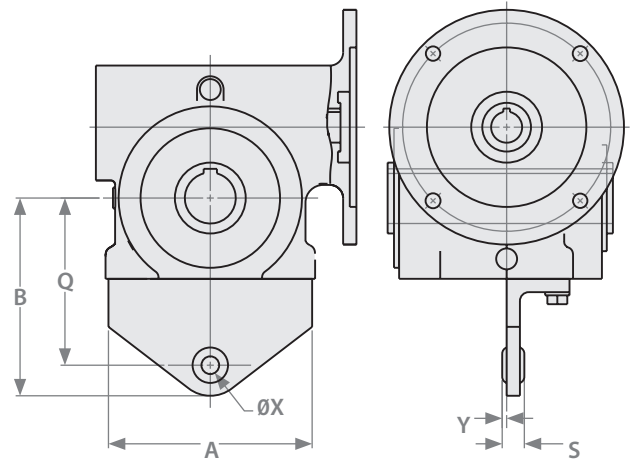
All dimensions are in inches.

# ACCESSORIES



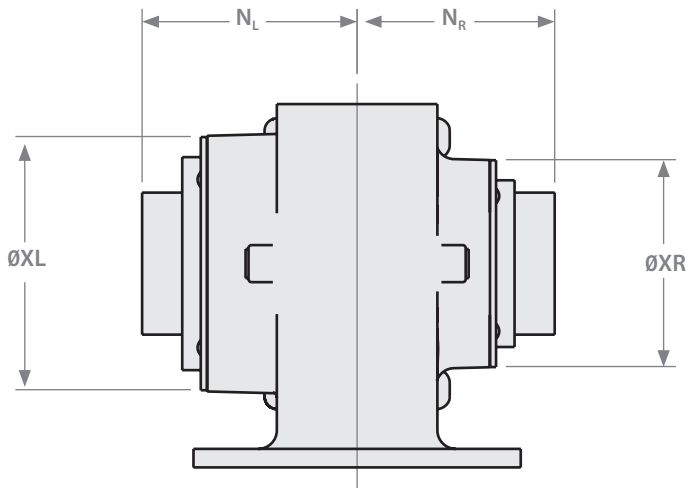
## TORQUE ARM BRACKETS

SIZE	A	B <sub>1</sub>	Q <sub>1</sub>	S	X	Y	KIT#
S17	5.13	5.36	4.50	0.63	0.50	0.13	TK9952720
S20	5.75	5.58	4.72				TK9952721
S24	6.00	5.80	4.94				TK9952722
S26	7.25	6.24	5.38				TK9952723
S30	7.63	6.80	5.94				TK9952724



## VENT OPTION

HEIGHT	HEX	KIT #
0.59	0.50	52096



## SHAFT CLAMPING COLLARS

BORE	THK.	O.D.	KIT #
1.000	0.50	1.75	CK52228
1.188		CK52230	
1.250		CK52231	
1.438	0.56	2.25	CK52233
1.500		2.38	CK52234
1.688	0.69	2.75	CK52235
1.938		3.00	CK52237

## SAFETY COVERS

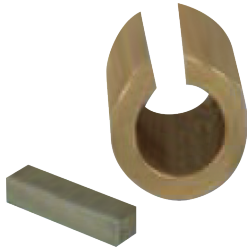
SIZE	COVER SIDE	N <sub>L</sub>	N <sub>R</sub>	X <sub>L</sub>	X <sub>R</sub>	KIT #
S17	L/R	4.13	3.75	4.63	3.50	CK9952710
	Left	–	–	–	–	CK9952710L
S20	Right	–	3.75	–	3.50	CK9952710R
	L/R	4.35	4.00	5.13	4.19	CK9952711
S24	Left	–	–	–	–	CK9952711L
	Right	–	4.00	–	4.19	CK9952711R
S26	L/R	4.45	4.09	5.75	4.81	CK9952712
	Left	–	–	–	–	CK9952712L
S26	Right	–	4.09	–	4.81	CK9952712R
	L/R	4.75	4.25	6.42	4.90	CK9952713
S30	Left	–	–	–	–	CK9952713L
	Right	–	4.25	–	4.90	CK9952713R
S30	L/R	5.19	4.56	7.46	5.28	CK9952714
	Left	–	–	–	–	CK9952714L
	Right	–	4.56	–	5.28	CK9952714R

# ACCESSORIES

## BRONZE HOLLOW OUTPUT SHAFT BUSHINGS

SIZE	BUSHING I.D. **	KIT #
S20	1.000	WKS850468
	1.188	WKS850625
	1.250	WKS850469
S24	1.000	WKS850653
	1.188	WKS850662
	1.250	WKS850470
S26	1.000	WKS850627
	1.250	WKS850479
	1.438	WKS850472
	1.500	WKS850473
S30	1.250	WKS850481
	1.438	WKS850474

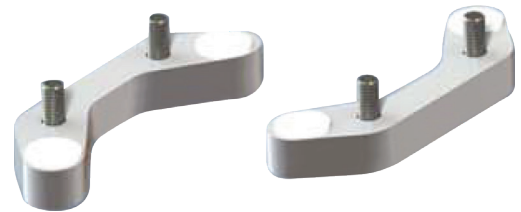
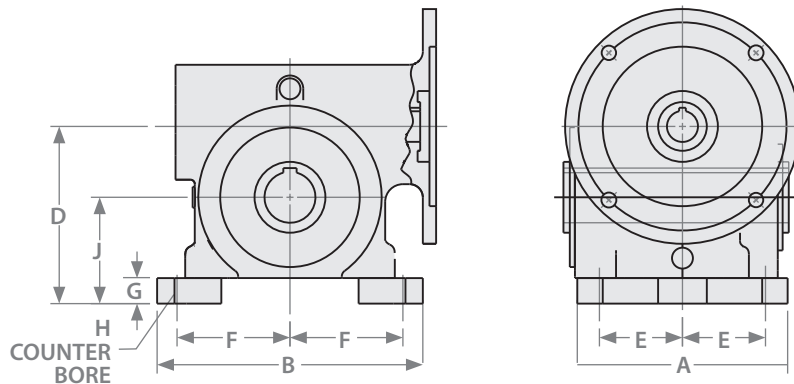
\*\* Bore Tolerance  $^{+0.002}/_{0.000}$



## BRONZE INPUT SHAFT BUSHING

MOTOR FLANGE (SHAFT DIAMETER)	REDUCER INPUT ADAPTOR (BORE SIZE)	BUSHING LENGTH	KEYWAY SIZE	KIT #
56C (0.625)	140TC (0.875)	1.44	3/16 X 3/32	WK9810170

All kits include mounting hardware. | All dimensions are in inches.



## BASE FEET (TWO-PIECE)

SIZE	A	B	D	E	F	G	H	J	KIT #
S17	5.63	6.86	4.50	2.25	2.87	0.69	3/8 SHCS	2.75	BK9998140
S20	5.81	7.50	5.00	2.34	3.19	0.72		3.00	BK9998141
S24	6.12	8.30	5.63	2.44	3.53	0.75	7/16 SHCS	3.25	BK9998142
S26	6.65	9.41	6.31	2.63	4.00		3/8 SHCS	3.69	BK9998143
S30	7.63	11.00	7.38	3.06	4.75	0.88	1/2 SHCS	4.38	BK9998144

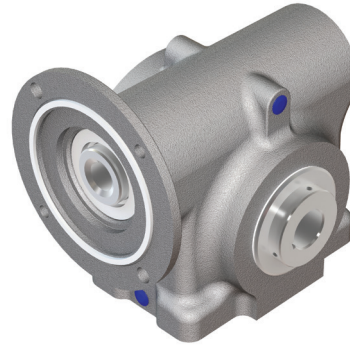
SHCS = Socket Head Cap Screw.



# STANDARD CONFIGURATIONS



MPSS



MPMS

## MPSS AND MPMS STANDARD CONFIGURATIONS

CASE SIZE / CENTER DISTANCE		QUILL INPUT OPTIONS			HOLLOW OUTPUT SHAFT BORE SIZES (DIA)							
					1.000	1.188	1.250	1.438	1.500	1.688	1.938	
S17	1.75	56C	140TC	56C with Bushing	●							
S20	2.00	56C	140TC	56C with Bushing	■	■	■	●				
					●	●	●					
S24	2.38	56C	140TC	56C with Bushing	■	■	■	●	●			
					●		●					
S26	2.62	56C	140TC	56C with Bushing	■		■	■	■	●		
					●		●	●	●			
S30	3.00	56C	140TC	56C with Bushing			■	■			●	
							●	●				

Bored-to-Size ● Bronze Output Bushings ■

ACCESSORIES
Shaft Clamping Collars
Torque Arm Brackets
Vent
Base Feet
Input Shaft Bushings
Output Shaft Bushings

RATIOS
5:1
10:1
15:1
20:1
25:1
30:1
40:1
50:1
60:1

# RATINGS SUMMARY

## QUICK SELECT AT 1750 RPM INPUT SPEED, 1.0 SERVICE FACTOR\*

Output RPM	Ratio	MOTOR INPUT HORSEPOWER										
		0.25	0.33	0.50	0.75	1.00	1.50	2.00	3.00	5.00	7.50	10.00
350	5	S17	S17	S17	S17	S17	S17	S17	S20	S26	S26	S30
233	7.5	S17	S17	S17	S17	S17	S17	S17	S24	S26	S30	
175	10	S17	S17	S17	S17	S17	S17	S20	S24	S30		
117	15	S17	S17	S17	S17	S17	S20	S24	S26	S30		
88	20	S17	S17	S17	S17	S20	S24	S24	S30			
70	25	S17	S17	S17	S20	S20	S24	S26	S30			
58	30	S17	S17	S17	S20	S24	S26	S30				
44	40	S17	S17	S17	S24	S24	S30	S30				
35	50	S17	S17	S20	S24	S26	S30					
29	60	S17	S20	S24	S26	S30						
22	80	S24	S24	S26								
18	100	S24	S26									

## CONTINUOUS DUTY MECHANICAL RATINGS, 1.0 SERVICE FACTOR\*

Size	Ratio <sup>1</sup>	5	7.5	10	15	20	25	30	40	50	60	80	100	
	Output RPM	350	233	175	117	88	70	58	44	35	29	22	18	
1750 INPUT SPEED	S17	Input HP	2.69	2.06	1.64	1.15	0.94	0.70	0.66	0.52	0.41	0.27	0.16	0.11
		Output Torque (lbf.-in.)	462	525	554	568	604	547	596	603	558	417	311	236
		Efficiency	95	94	94	91	89	87	84	80	76	72	64	59
		Overhung Load (lbf.)**	438	438	438	438	438	438	438	438	438	438	438	438
S20	HP	Input HP	3.70	2.84	2.24	1.59	1.24	1.01	0.86	0.68	0.56	0.41	0.22	0.16
		Output Torque (lbf.-in.)	639	732	769	794	806	803	788	795	791	656	437	355
		Efficiency	96	95	95	92	90	88	85	82	79	74	67	61
		Overhung Load (lbf.)**	1164	1164	1164	1164	1164	1164	1164	1164	1164	1164	1164	1164
S24	HP	Input HP	5.89	4.54	3.67	2.71	2.11	1.61	1.45	1.11	0.92	0.70	0.38	0.27
		Output Torque (lbf.-in.)	1017	1168	1249	1359	1383	1285	1360	1335	1329	1134	735	576
		Efficiency	96	95	95	93	91	88	87	83	80	75	66	59
		Overhung Load (lbf.)**	1177	1177	1177	1177	1177	1177	1177	1177	1177	1177	1177	1177
S26	HP	Input HP	7.70	5.93	4.82	3.42	2.64	2.17	1.80	1.42	1.18	0.92	0.49	0.34
		Output Torque (lbf.-in.)	1334	1533	1650	1724	1745	1758	1712	1737	1748	1556	979	767
		Efficiency	96	96	95	93	92	90	88	85	82	78	70	63
		Overhung Load (lbf.)**	1247	1257	1411	1370	1381	1397	1355	1384	1419	1457	1564	1573
S30	HP	Input HP	10.87	8.59	7.11	5.07	3.95	3.24	2.67	2.08	1.72	1.34	0.71	0.48
		Output Torque (lbf.-in.)	1886	2232	2448	2578	2645	2676	2586	2617	2643	2367	1478	1160
		Efficiency	96	96	96	94	93	92	90	87	85	82	73	67
		Overhung Load (lbf.)**	1355	1454	1632	1832	1987	2003	1945	1986	2033	2104	2179	2179

Size	Ratio <sup>1</sup>	5	7.5	10	15	20	25	30	40	50	60	80	100	
	Output RPM	232	155	116	77	58	46	39	29	23	19	15	12	
1160 INPUT SPEED	S17	Input HP	2.16	1.58	1.24	0.78	0.67	0.47	0.48	0.39	0.28	0.19	0.16	0.11
		Output Torque (lbf.-in.)	562	610	632	571	645	554	660	676	564	435	311	236
		Efficiency	96	95	93	90	88	86	84	80	75	72	64	59
		Overhung Load (lbf.)**	438	438	438	438	438	438	438	438	438	438	438	438
S20	HP	Input HP	2.85	2.18	1.68	1.06	0.91	0.73	0.86	0.51	0.56	0.41	0.22	0.16
		Output Torque (lbf.-in.)	743	849	863	788	891	865	788	920	791	656	437	355
		Efficiency	96	95	94	91	90	88	85	82	79	74	67	61
		Overhung Load (lbf.)**	1164	1164	1164	1164	1164	1164	1164	1164	1164	1164	1164	1164
S24	HP	Input HP	4.81	3.64	2.55	1.81	1.60	1.05	0.94	0.63	0.46	0.29	0.20	
		Output Torque (lbf.-in.)	1263	1431	1321	1376	1611	1280	1350	1333	1421	1138	837	654
		Efficiency	97	96	95	93	93	89	88	85	83	77	67	60
		Overhung Load (lbf.)**	1177	1177	1177	1177	1177	1177	1177	1177	1177	1177	1177	1177
S26	HP	Input HP	5.96	4.67	3.41	2.41	1.76	1.43	1.28	1.06	0.84	0.60	0.37	0.25
		Output Torque (lbf.-in.)	1567	1836	1770	1847	1764	1762	1864	2028	1932	1562	1126	880
		Efficiency	97	97	96	94	92	91	89	88	85	80	69	64
		Overhung Load (lbf.)**	1247	1257	1411	1370	1381	1397	1355	1384	1419	1457	1564	1573
S30	HP	Input HP	8.75	7.11	5.31	3.35	2.70	2.19	1.95	1.59	1.29	0.88	0.54	0.37
		Output Torque (lbf.-in.)	2303	2802	2768	2580	2745	2749	2891	3101	3057	2381	1735	1356
		Efficiency	97	97	96	94	93	92	91	90	87	83	74	67
		Overhung Load (lbf.)**	1355	1454	1632	1832	1987	2003	1945	1986	2033	2104	2179	2179

<sup>1</sup>Nominal Ratio. Reference SE Encore Series Catalog for exact ratio.

\*For thermal ratings below 1750 RPM input speed, please contact Winsmith.

\*\*Overhung load is given at a distance equal to one shaft diameter from the face of the output seal

# RATINGS SUMMARY

Size	Ratio <sup>1</sup>	5	7.5	10	15	20	25	30	40	50	60	80	100	
	Output RPM	174	116	87	58	44	35	29	22	17	15	11	9	
<b>870 INPUT SPEED</b>	S17	Input HP	1.78	1.27	0.93	0.58	0.50	0.36	0.36	0.30	0.21	0.15	0.10	0.06
		Output Torque (lbf.-in.)	619	656	635	571	647	555	660	716	565	459	364	268
		Efficiency	96	95	94	91	89	85	84	82	75	71	63	59
		Overhung Load (lbf.)**	438	438	438	438	438	438	438	438	438	438	438	438
	S20	HP	2.38	1.82	1.25	0.79	0.68	0.54	0.53	0.41	0.31	0.21	0.13	0.09
		Output Torque (lbf.-in.)	830	950	858	792	890	871	1016	995	887	664	513	415
		Efficiency	96	96	95	92	91	89	88	84	80	74	67	62
		Overhung Load (lbf.)**	1164	1164	1164	1164	1164	1164	1164	1164	1164	1164	1164	1164
	S24	Input HP	3.97	3.01	1.91	1.36	1.20	0.78	0.71	0.54	0.48	0.34	0.23	0.16
		Output Torque (lbf.-in.)	1394	1581	1321	1381	1613	1276	1359	1336	1417	1144	892	696
		Efficiency	97	97	95	94	93	90	88	85	82	78	68	61
		Overhung Load (lbf.)**	1177	1177	1177	1177	1177	1177	1177	1177	1177	1177	1177	1177
	S26	HP	4.99	3.92	2.57	1.80	1.31	1.07	0.95	0.81	0.63	0.45	0.29	0.20
		Output Torque (lbf.-in.)	1756	2066	1782	1849	1762	1769	1858	2028	1924	1569	1206	941
		Efficiency	97	97	96	94	93	91	90	87	84	81	72	64
		Overhung Load (lbf.)**	1247	1257	1411	1370	1381	1397	1355	1384	1419	1457	1564	1573
S30	Input HP	7.35	5.90	3.97	2.53	2.03	1.65	1.46	1.23	0.99	0.67	0.43	0.30	
	Output Torque (lbf.-in.)	2583	3109	2761	2595	2752	2768	2894	3137	3059	2395	1876	1465	
	Efficiency	97	97	96	94	94	93	91	88	85	83	76	67	
	Overhung Load (lbf.)**	1355	1454	1632	1832	1987	2003	1945	1986	2033	2104	2179	2179	
<b>600 INPUT SPEED</b>	Size	Ratio <sup>1</sup>	5	7.5	10	15	20	25	30	40	50	60	80	100
		Output RPM	120	80	60	40	30	24	20	15	12	10	8	6
	S17	Input HP	1.34	0.89	0.64	0.39	0.34	0.25	0.25	0.21	0.14	0.11	0.07	0.04
		Output Torque (lbf.-in.)	678	668	638	566	645	558	657	716	568	482	382	279
		Efficiency	97	96	94	91	90	86	85	81	77	70	63	59
		Overhung Load (lbf.)**	438	438	438	438	438	438	438	438	438	438	438	438
	S20	HP	1.88	1.36	0.86	0.55	0.46	0.37	0.40	0.29	0.21	0.15	0.09	0.07
		Output Torque (lbf.-in.)	956	1035	858	796	890	875	1084	993	891	701	538	435
		Efficiency	97	96	95	92	91	89	86	83	80	74	67	62
		Overhung Load (lbf.)**	1164	1164	1164	1164	1164	1164	1164	1164	1164	1164	1164	1164
	S24	Input HP	3.03	1.12	1.31	0.94	0.76	0.56	0.51	0.38	0.34	0.24	0.16	0.12
		Output Torque (lbf.-in.)	1544	1689	1316	1383	1464	1311	1380	1325	1411	1168	947	738
		Efficiency	97	96	95	94	92	90	86	83	80	77	71	61
		Overhung Load (lbf.)**	1177	1177	1177	1177	1177	1177	1177	1177	1177	1177	1177	1177
	S26	HP	3.91	3.08	1.81	1.24	0.93	0.74	0.68	0.57	0.45	0.32	0.21	0.15
		Output Torque (lbf.-in.)	1994	2356	1821	1843	1810	1774	1881	2022	1926	1587	1285	1001
Efficiency		97	97	96	94	93	91	88	84	82	79	74	65	
Overhung Load (lbf.)**		1247	1257	1411	1370	1381	1397	1355	1384	1419	1457	1564	1573	
S30	Input HP	3.39	4.69	2.77	1.92	1.44	1.15	1.05	0.87	0.70	0.49	0.32	0.22	
	Output Torque (lbf.-in.)	3395	3575	2779	2851	2831	2780	2936	3133	3047	2490	2019	1573	
	Efficiency	95	97	95	94	93	92	89	85	83	80	76	70	
	Overhung Load (lbf.)**	1355	1454	1632	1832	1987	2003	1945	1986	2033	2104	2179	2179	
<b>300 INPUT SPEED</b>	Size	Ratio <sup>1</sup>	5	7.5	10	15	20	25	30	40	50	60	80	100
		Output RPM	120	80	60	40	30	24	20	15	12	10	8	6
	S17	Input HP	0.74	0.44	0.32	0.20	0.17	0.13	0.13	0.11	0.07	0.06	0.04	0.02
		Output Torque (lbf.-in.)	749	666	627	580	644	566	658	719	567	509	403	292
		Efficiency	97	96	94	91	89	86	83	79	76	73	63	59
		Overhung Load (lbf.)**	438	438	438	438	438	438	438	438	438	438	438	438
	S20	HP	1.09	0.72	0.43	0.29	0.24	0.19	0.21	0.15	0.11	0.08	0.05	0.04
		Output Torque (lbf.-in.)	1111	1088	859	855	891	876	1083	993	891	745	568	459
		Efficiency	97	96	95	92	90	88	84	80	78	75	67	62
		Overhung Load (lbf.)**	1164	1164	1164	1164	1164	1164	1164	1164	1164	1164	1164	1164
	S24	Input HP	1.73	1.12	0.68	0.50	0.39	0.31	0.28	0.21	0.17	0.13	0.08	0.06
		Output Torque (lbf.-in.)	1754	1689	1353	1461	1467	1412	1498	1430	1422	1252	988	788
		Efficiency	97	96	95	92	90	88	84	81	78	75	70	64
		Overhung Load (lbf.)**	1177	1177	1177	1177	1177	1177	1177	1177	1177	1177	1177	1177
	S26	HP	2.30	1.68	0.95	0.68	0.52	0.41	0.38	0.29	0.23	0.18	0.11	0.08
		Output Torque (lbf.-in.)	2330	2546	1888	1999	1968	1920	2055	2019	1934	1710	1380	1073
Efficiency		96	96	94	93	91	89	85	82	79	77	72	67	
Overhung Load (lbf.)**		1247	1257	1411	1370	1381	1397	1355	1384	1419	1457	1564	1573	
S30	Input HP	3.39	2.80	1.51	1.09	0.81	0.65	0.60	0.45	0.36	0.28	0.17	0.12	
	Output Torque (lbf.-in.)	3395	4192	2949	3166	3116	3042	3250	3132	3067	2712	2050	1696	
	Efficiency	95	95	93	92	91	90	86	83	80	78	73	69	
	Overhung Load (lbf.)**	1355	1454	1632	1832	1987	2003	1945	1986	2033	2104	2179	2179	

<sup>1</sup>Nominal Ratio. Reference SE Encore Series Catalog for exact ratio.

\*For thermal ratings below 1750 RPM input speed, please contact Winsmith.

\*\*Overhung load is given at a distance equal to one shaft diameter from the face of the output seal



---

WINSMITH  
172 EATON STREET  
SPRINGVILLE, NY 14141  
PHONE: 716.592.9310

HBD Industries, Inc. and its subsidiaries cannot accept responsibility for possible errors in catalogues, brochures, other printed materials, and website information, and may change, delete, add to or otherwise modify such information without notice. HBD reserves the right to alter its products without notice, including products already on order, provided that such alteration can be made without changes being necessary in specifications already agreed to. All trademarks in this material are the property of the HBD Industries Inc., or its subsidiaries. The HBD and HBD brands logotype, are trademarks of HBD Industries, Inc. All rights reserved.

2023