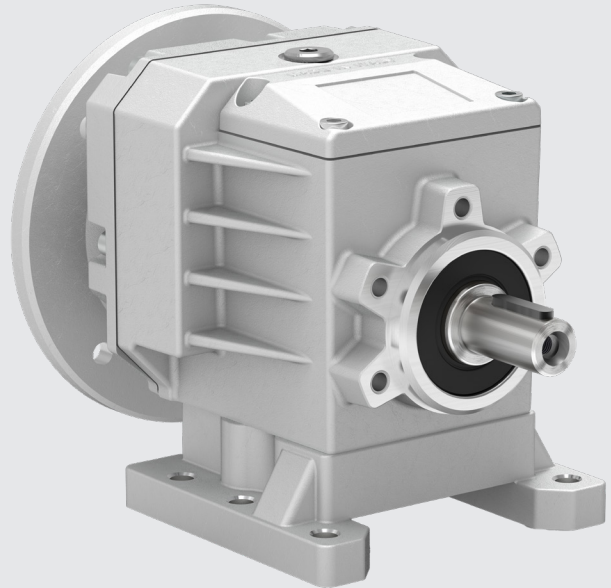


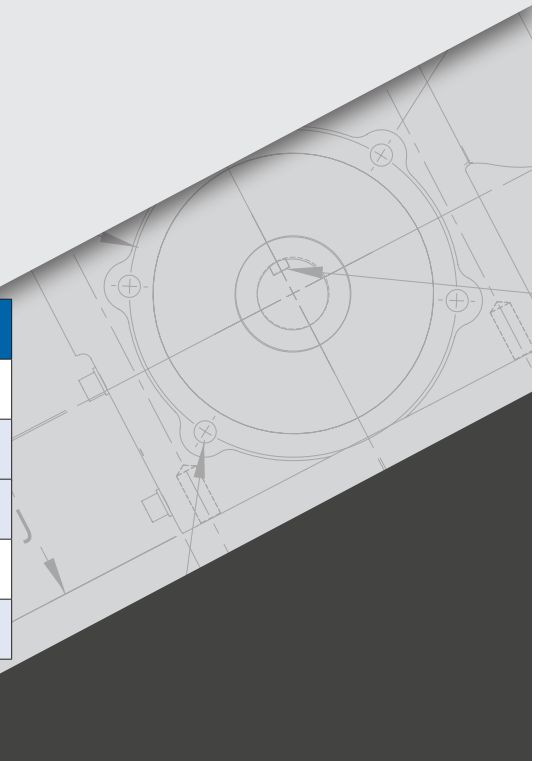
## HELICAL INLINE GEARBOX (HXI)

Winsmith Helical Inline Gearbox (HXI) has been designed with full modularity. It includes a NEMA C flange to optimize installation space while enhancing performance. Winsmith HXI Units are built to order with available stock inventory including available accessories which allow for quick shipment within 1-3 days from our Asheville, NC gearing facility.

- Precision ground and hardened gears to provide optimal durability and efficiency, ensuring long operating life, low noise and minimal energy losses.
- Single-piece aluminum housing design which provides excellent corrosion protection and leak free operation. While it does not require a secondary finish, it easily accommodates paint for aesthetic purposes.
- Precision machining guarantees the proper alignment of bearings and gears, which is crucial for optimal operation and reliability.
- Featuring a removable inspection cover that facilitates regular gear inspections during maintenance, ensuring optimal performance over time.
- Fully modular design with input motor C Flange and input shaft for NEMA standard motors.
- Shipped with synthetic universal lubricant level.
- Standard options and accessories to accommodate a variety of mounting configurations.

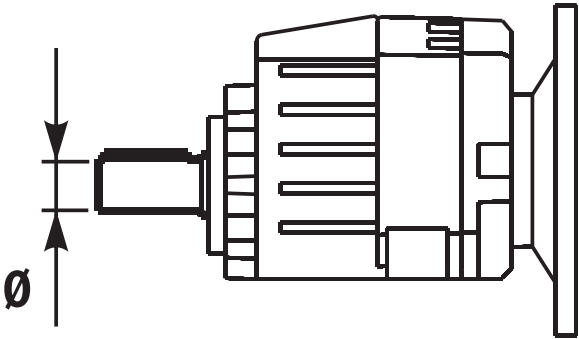


HELICAL INLINE GEARBOX (HXI)		
	Sizes	412A, 413A, 512A, 513A, 612A, 613A
Ratio Range	2 Stage	3.52 to 61.89
	3 Stage	38.4 to 480.16
	Input Power (hp)	¼ to 5
	Output Torque (lbf-in)	1460 to 4550



## MODULAR BASE

SIZE	TORQUE (lbf-in)	Ø DIAMETER OUTPUT SHAFT (in)
412A	1550	1.000
413A	1550	1.000
512A	3180	1.250
513A	3180	1.250
612A	4550	1.375
613A	4550	1.375



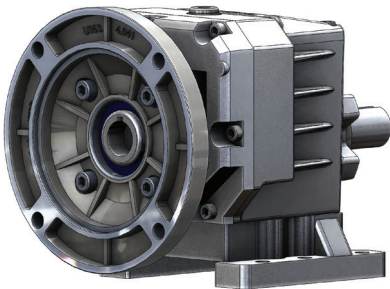
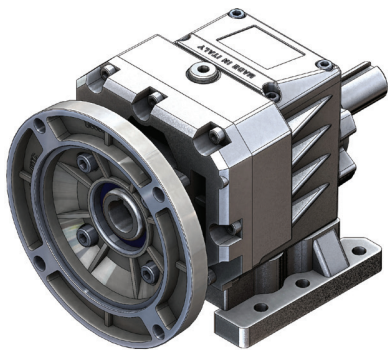
## AVAILABLE ACCESSORIES



OUTPUT FLANGE



FEET



Visit the [product page](#) for more details.